

Violin 1

# Radio Orfeo

for string orchestra

**A**

## 1. Electric Mains Hum (G sharp, c. 50 Hz)

Charlie Barber

$\text{♩} = 108$  Solo

8<sup>va</sup>-----

pizz.  
(snap)  $\phi$

arco

*pp* *non cresc.*

*sf* *pp* *f* *pp* *pp* *f* *pp* *pp*

(8)-----

7

*pp* *p* *pp*

*mf* *pp* *pp* *p* *pp* *pp* *p* *pp*

**B**

## 2. Tuning to Radio Station, No 1

13  $\text{♩} = 96$  Tutti Solo

*pp* *f* *pp* *pp* *f* *pp*

18 Tutti

div.

*pp* *mf* *pp* *pp* *p* *pp*

2

## Violin 1

**C****3. Radio Message, No 1: "Mirrors would do well to reflect again"****Allegro energico**

♩ = 120

25 div. *ff*

30 *sf* **D** unis. *p*

35 *mf* *cresc.* *f*

39 div. *ff* **E** unis. *mp*

44

49 **F** *mf*

53 *f* *mp*

## Violin 1

57 **G**

*p* *mp* *mf*

63 **H**

*pp* *p* *pp*

69 **I**

*pp* *p* *pp* *ff*

75

78

**J** 4. Tuning to Radio station, No 2

81 ♩ = 96 unis.

*pp* *p* *pp* *pp* *p* *pp*

**K**

5. Radio Message, No 2: "Jupiter enlightens those he would destroy"

87 ♩ = 112 *f*

*f*

92

## Violin 1

96

*mf* *cresc.* *sf* *p*

102

*mf* *cresc.* *sf*

108 **L**

*f*

114 div.

*sf* *ff* *sf* *ff* *sf*

119 unis.

*ff* *fff* *f*

125

*cresc.*

## Violin 1

**M****6. Tuning to Radio station, No 3**

129 ♩ = 96 ♩ = 96

*pp* *p* *pp* **2**

**N****7. Radio Message, No 3: "One glass of water illumines the world"****Tranquillo**

135 ♩ = 60 non vib.

*pp*

**O**

139

*p* **2**

**P**

147

*pp* **2**

**Q**

155 norm.

*p* *pp* **2**

163

**2**

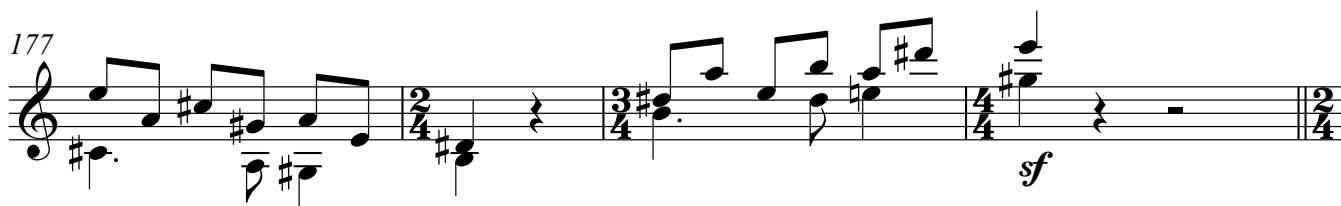
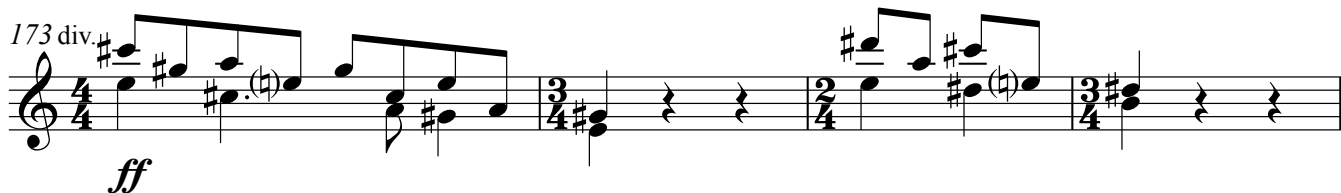
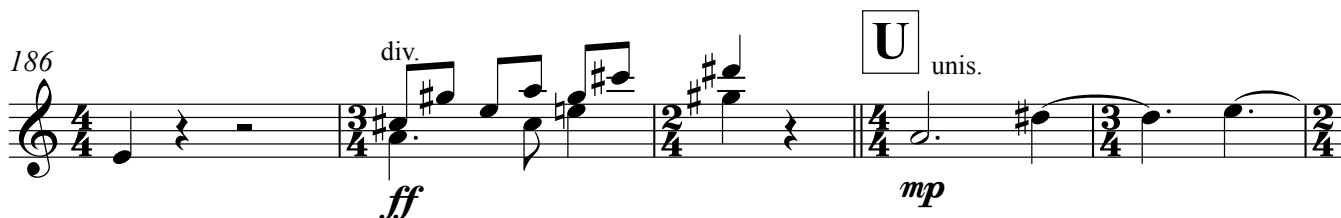
## Violin 1

**R****8. Tuning to Radio station, No 4**

167 ♩ = 96

**S****9. Radio Message, No 4: "Silence is twice as fast backwards"****Allegro energico**

♩ = 120

**T**

## Violin 1

197 **V**

*mf*

202 **W**

*f* *mp* *p* *mp*

208

*mf*

213 **X**

*pp* *p* *pp* *pp* *p* *pp*

220 **Y**

*ff*

225

*ff*